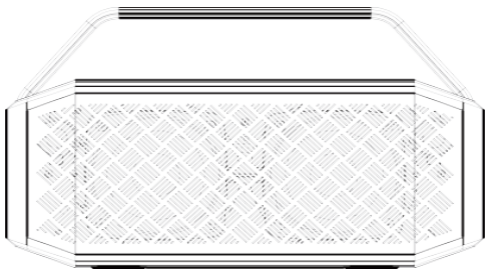


aiwa[®]
Japan est1951

MI-X280 Lunatic

User Manual



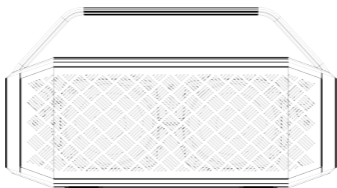
Important Safety Instructions

1. Please do not place device near any form of heat sources.
2. Please use the accessories specified by the manufacturer.
3. Please refer all servicing/repairs to a qualified personnel should there be any form of damage to the device.
4. Keep this user manual for future referencing/troubleshooting.
5. Please heed ALL safety cautions.

Safety Cautions

1. Always keep device AWAY from fire and heat sources.
2. Do NOT attempt to disassemble or alter the device.
3. Do NOT expose device to excessive heat (Direct sunlight etc.).
4. Do NOT immerse device into any form of liquids.

Unboxing



- MI-X280 Speaker
- Type-C Charging Cable
- 3.5mm Aux Cable
- User's Manual

Please refrain from using any damaged components. Contact your local authorized AIWA distributor/customer service should you need any assistance.

Product Specifications

Model Number: MI-X280

BT Version: V5.0

IP Rating: IPX5

Power Output: 2 X 30W

Frequency Response: 75~20kHz

S/N Ratio: ≥ 80 dB

Sensitivity: 95dB + 3dB

Supports: BT, AUX, TF Card, USB Card

Supported Profiles: A2DPV 1.2, AVRCPV 1.4, GAVDPV 1.2, AVDTPV 1.2,
SPPV 1.2, AVCTPV 1.2

Transmission Distance (Estimated): 10 Meters (No Obstacles)

Battery: 7.2V/ 4000mAH (Li-on)

Playback Time: 3 - 10 Hours (Depends on Volume)

Charging Time: 3 - 4 Hours

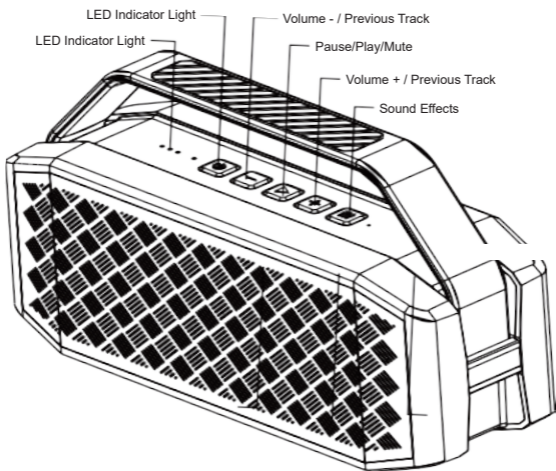
DC Input Voltage/Current: Type C, DC 5V/2000mA

Dimensions: 316.8*190.3*112.4mm

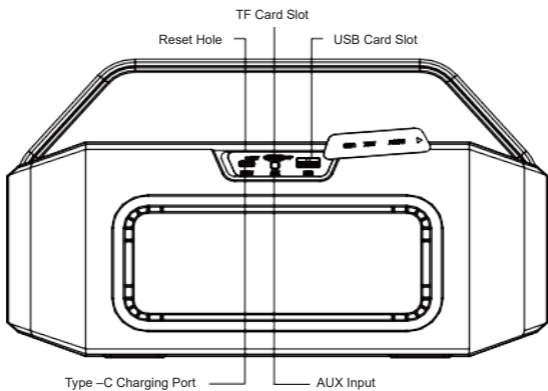
Weight: 2630g \pm 20g

The above are estimated values tested in a practical environment and may vary upon individual usage habits.

Product Overview



Product Overview



Product Usage Guide

Power ON/OFF:

Long press power button

Music Control:

Play/Pause: Click ▶ once (1)

Volume UP: Click + button

Volume DOWN: Click - button

Next Track: Press and hold + button

Previous Track: Press and hold - button

Switch in between BT playback/Aux Playback: 

Call Control:

Answer/End incoming call: Click ▶

Reject incoming call: Press and hold ▶

Redial last called number: Press and hold ▶

Sound Mode Change:

Click  (Sound Effect Button to switch in between Outdoor/Indoor Mode).

*Outdoor Mode: LED light blinking in blue

*Indoor Mode: LED light lights up in blue (Non-Blinking)

Playback Sources:

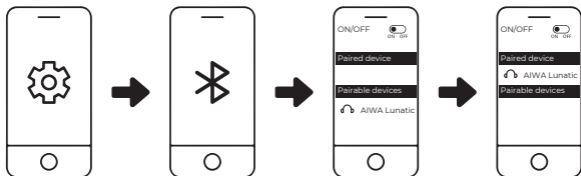
AUX: Connect AUX cable to the designated port and your mobile device.

*LED light lights up in green (Non-Blinking) indicates successful AUX connection

* Media control and call control functions are not usable while using AUX connection

TF Card: Insert TF card into the designated port. Playback can be commenced thereafter.

Connecting the Product



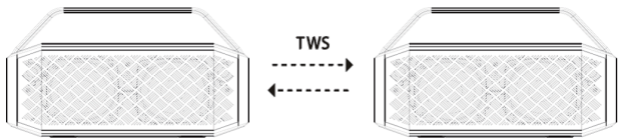
1. Turn on Bluetooth (BT) on your mobile device.
2. Turn on the speaker.
3. Search and connect to "AIWA Lunatic" from your mobile device.

AIWA MI-X280 LUNATIC automatically reconnects to the last connected mobile device. (Speaker maximum device memory: 8 mobile devices)


Dis-connecting the Product

Long press both **+** & **-** at the same time to disconnect.

TWS Function



TWS Operation:

1. Turn on Both speakers.
2. Choose one of the units to function as the "Main unit" (This will be the LEFT Side Audio Playback Channel).
3. Double click  button on the "Main unit" only. * LED Indicator Light will be blinking in blue and green rapidly *
4. Both speakers will now proceed to pair with each other.
5. *Main unit's LED light blinking in BLUE* + *2nd Speaker unit LED light lights up in BLUE (Non- blinking) * indicates successful TWS Pairing.
6. Turn on Bluetooth (BT) on your mobile device.
7. Search and connect to "AIWA Lunatic" from your mobile device.
8. *Both unit's LED light lights up in BLUE (Non-blinking)* indicates successful connection to mobile device.
9. Playback should now commence via both speaker units at the same time.
10. Long press both **+** & **-** at the same time on either one of the speakers to dis-connect TWS.

Battery & Charging

Charging the speaker:

Connect Type-C charging cable to the speaker and a suitable power source.

*Low Battery Warning: Flashing Red LED Indicator Lights

*White LED Indicator Lights reflects the battery level accordingly.

Approximate charging time: 3-4 Hours

Please fully charge up the speaker prior to first-time usage.

Troubleshooting

Unable to connect to device:

1. Please check if your mobile device supports A2DP profile
2. Please ensure the speaker is not connected to other devices
3. Please ensure the speaker is within 10m from the device
4. Please ensure the speaker is in pairing mode
(LED Indicator light blinking blue)

No sound is coming out of the speaker:

1. Please ensure your device is connected to the speaker. (LED Indicator should be in blue (Non-blinking)).
2. Please ensure the music volume is at an audible level on both your mobile device and speaker.

Perform a factory reset if the function buttons are not working/ any form of abnormalities are observed during speaker usage: Insert a small pin into the designated reset hole and hold it for two (2) seconds until the LED Lights extinguishes.

aiwa[®]
Japan est1951

Aiwa Electronics Int'l Co., Ltd.
Explore more at www.int-aiwa.com