

aiwa®

Japan est1951

Wired Headphones



ESTM-100

User Manual



iOS



Android



Windows

made for

FAQ

Q: How should I connect the ESTM-100 to my music player/device?

A: Plug the ESTM-100 cable into the 3.5mm stereo plug on your music player.

Q: I am experiencing weird/ unstable bass response from the earphones.

A: Make sure the ear tips form a tight seal within your ears.

Q: I am experiencing discomfort from using the earphones.

A: Choose the correct sized ear-tips to your preference.

Q: I am experiencing different volume levels from each side of the earphones/ noise while rotating the earphone jack.

A: Please clean the earphones jack and make sure there is no presence of dust/ oxide layers.

Q: I am hearing no vocals, only accompaniment from my music.

A: The music player might not be compatible with these earphones. Please contact customer service.

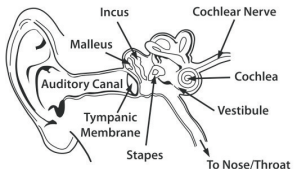


Earphones Tempering

Upon usage of new earphones, we strongly recommend to temper it by playing music for a period of 100-200 hours at medium volume level.

Physiology of the Ear

For additional information, reference:



*Having the correct headphone side in the correct ear affects listening experience. Note the "L" and "R" markings on the side of each headphone. "L" is for the left ear. "R" is for the right ear.

*Excessive listening levels can cause permanent hearing damage. Avoid loud listening, especially for extended periods of time. Recommended listening time is not more than 90 minutes.

Important Safety Notes

Make sure the volume of the music player is turned down before connecting your headphones. After connecting your headphones, gradually turn up the volume until you reach a comfortable listening level.

Noise levels are measured in decibels (dB), exposure to any noise at or above 85 dB may result in hearing loss.

Monitor headphones usage. Hearing loss is a function of loudness versus time.

This is decibel (dB) table compares some common sounds and shows how they rank in potential harm to hearing.

SOUND	NOISE LEVEL	EFFECT
Whisper	30	Very quiet
Quiet Office	50-60	Comfortable hearing levels are under 60 dB
Vacuum Cleaner / Hair Dryer	70	Intrusive; interferes with telephone conversations
Food Blender / Garbage Truck	85-90	85 dB is the level at which hearing damage (8 hrs.) begins
Cement Mixer / Power Saw	100	No more than 15 minutes of unprotected exposure recommended for sounds between 90-100 dB
Drill / Jackhammer	110	Regular exposure to sound over 100 dB of more than 1 minute risks permanent hearing loss
Rock Concerts (varies)	110-140	Threshold of pain begins around 125 dB

Chart information obtained from : www.nidcd.nih.gov/health/education/teachers/pages/common_sounds.aspx

Specifications

Earphone Type : Wired in earphone
Shell material : Aluminum alloy & PC
Frequency Response : 20Hz-20KHz
Driver Type : Dynamic, N40 Neodymium magnet
Speaker Diameter : 10mm
Speaker impedance : 16Ω

Tated input : 10mW
Max. output : 100mW
Sensitivity : 98dB(±3dB) at 1KHz
Plug : Gold Plated 3.5mm Stereo Plug
Cable length : Y type1200mm±10mm
Weight : 10g

Use Responsibly

Do not use headphones when it's unsafe to do so - while operating a vehicle, riding a bike, crossing streets, or during any activity or in an environment where your full attention to your surroundings is required. It's dangerous to drive while wearing headphones, and in many places, illegal because it decreases your chances of hearing life-saving sounds outside of your vehicle, such as another car's horn and emergency vehicle sirens. Please avoid wearing your headphones while driving.

aiwa®

Japan est1951

Aiwa Electronics Int'l Co., Ltd.
Explore more at www.int-aiwa.com