

Important Safety Instructions

1. Please do not place device near any form of heat sources.
2. Please use the accessories specified by the manufacturer.
3. Please refer all servicing/repairs to a qualified personnel should there be any form of damage to the device.
4. Keep this user manual for future referencing/ troubleshooting.
5. Please heed ALL safety cautions.

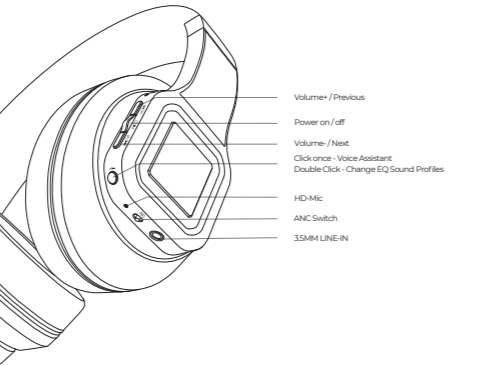
Safety Cautions

1. Always keep device AWAY from fire and heat sources.
2. Do NOT attempt to disassemble or alter the device.
3. Do NOT expose device to excessive heat (Direct sunlight etc.).
4. Do NOT immerse device into any form of liquids.

Warnings

Using earphones/headphones at moderate to high volumes for extended periods of time will result in permanent hearing damage. We recommend that you always keep media playback volume level from low to moderate. Please do not use earphones while performing activities that require hearing surrounding noises/ sounds. (Driving, Cycling, jogging etc.)

Product Overview



Unboxing

- EB-X850HANC Headphones
- 3.5mm Audio Cable
- Charging Cable
- User's Manual
- Carrying Case

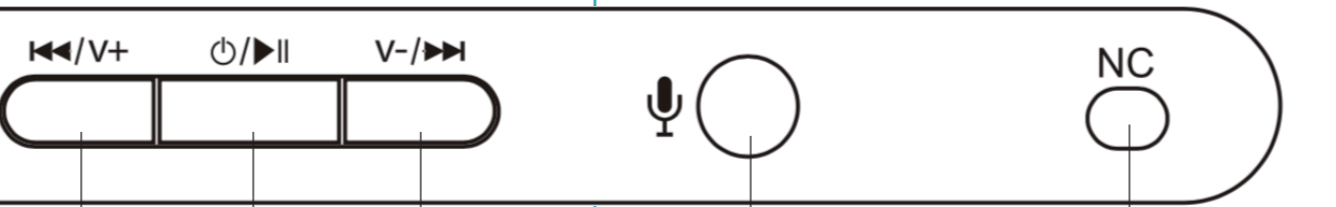
Please refrain from using any damaged components. Contact your local authorized AIWA distributor/customer service should you need any assistance.

Product Specifications

Model Number: EB-X850HANC
 BT Version: V5.0
 IP Rating: IPX4
 Active Noise Cancellation: 20dB
 Driver unit: 40mm
 Frequency Response: 20~20kHz
 Impedance: 32Ω
 Microphone Sensitivity: -42 ± 3dB
 Headphone Sensitivity: 95dB ± 3dB
 Supported Profiles: HSP/HFP/A2DP/AVRCP/AAC/SBC
 Transmission Distance (Estimated): 10 Meters (No Obstacles)
 Battery: 650mAh (Type C ; DC 5V 1A)
 Playback/ Call Time: Up to 23 Hours
 Standby Time: ≥ 45 Days
 Charging Time : 3 Hours
 Weight: 293g

The above are estimated values tested in a practical environment and may vary upon individual usage habits.

Product Usage Guide



Increase Volume: Click once to adjust volume level
Previous Track: Press and hold

Decrease Volume: Click once to adjust volume level
Next Track: Press and hold

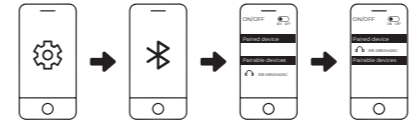
Power ON/OFF: Press and hold for three (3) seconds
Play/Pause: Click once
Answer/End Calls: Click once
Reject Calls: Press and hold for two (2) seconds
Dial last number: Double Click

EQ Modes: Double Click to cycle between:
 · Pop (Default)
 · Bass Boosted Profile
 · Treble Boosted Profile
 · Rock
 · Jazz

Activate Voice Assistant: Click once

AUDIO PLAYBACK VIA AUX 3.5mm PORT:
 Connect the 3.5mm audio cable to your audio source and headphones. This automatically switches headphones to "Passive mode" where power is not drawn from the in-built batteries of the headphones. Please turn off headphones before listening via AUX 3.5mm Audio Cable.

Connecting the Product



1. Turn on Bluetooth (BT) on your mobile device.
2. Turn on Headphones. (Headphones will enter BT pairing mode)
3. Search and connect to " EB-X850HANC " from your mobile device

EB-X850HANC will automatically connect to the last paired device if device is on and within connection range.

Multi-connect (Up to 2 devices/audio sources)

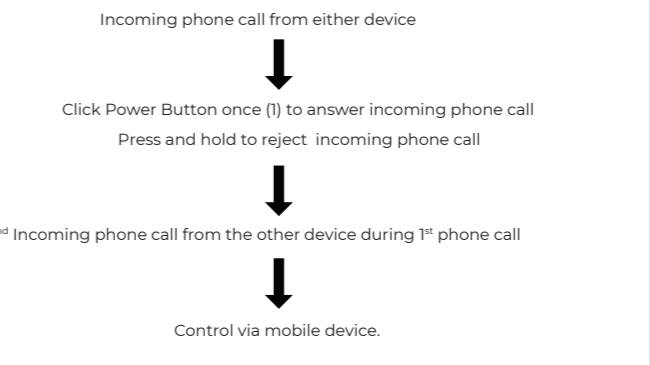
EB-X850HANC can connect to up to 2 mobile devices at the same time.

To pair with two (2) devices:

1. Turn on Bluetooth (BT) on your mobile device A.
2. Turn on Headphones. (Headphones will enter BT pairing mode)
3. Search and connect to "EB-X850HANC" from mobile device A.
4. Turn off BT on mobile device A, and repeat the above for mobile device B.
5. Turn on Mobile device A again and the headphones will pair to both devices automatically.

Call Control while connected to 2 devices.

It will automatically prioritize incoming calls/ notifications and audio playback (Pause music on one device, and play music on the other)



Battery & Charging

Charging: *Red Indicator Light*
 Full Charge: *Extinguished Indicator Light*

Approximate charging time: 3 Hours

EB-X850HANC will turn off automatically after 5 minutes of disconnection/inactivity. Please charge the headphones every six (6) months.

Customer Service

Please visit www.int-aiwa.com for more product information. Contact your local authorized dealer/ customer service by referring to the warranty label/receipt provided with your purchase.