

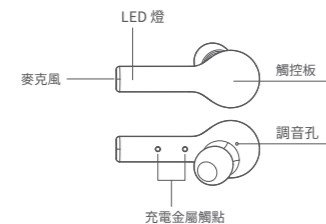


AT-X80R 真無線藍牙耳機

Designed in Japan
アイワ株式会社

認識耳機

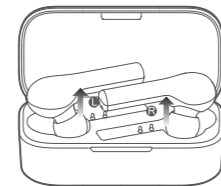
選擇並組裝耳套



雙耳機配對

- 首次配對方法:
- 取出兩隻耳機，再將兩隻耳機放回充電盒中。（此步驟為新機激活）
 - 再次取出兩隻耳機
 - 刷新手機藍牙設備列表，點擊配對AT-X80R，完成配對
- *耳機取出會自動開機，若未自動開機，請充電後重新嘗試*

- 切換設備配對方法:
- 關閉手機藍牙，耳機自動斷開進入配對模式
 - 刷新B手機藍牙設備列表，點擊配對AT-X80R，完成配對
- *不支持同時連接兩台手機，下次開機默認回連上次配對的手機*



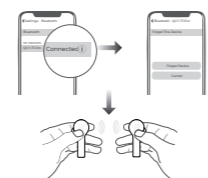
恢復原廠設置

- 已有連接過手機，在手機藍牙設備列表中，找到AT-X80R，點擊進入設置，選擇忽略或取消配對。
- 取出兩隻耳機，同時長按8秒，直至紅燈長亮2秒後熄滅，表示調為關機狀態。
- 重新同時長按兩隻耳機大約10秒，直至紅綠燈同時閃3次，紅燈閃1次，表示耳機重置成功。

恢復出廠後用首次配對的方法連接即可正常使用

手動配對 (此方法適用於對耳失去連結的情況)

關機狀態下，觸摸觸控板5秒，直至紅綠燈交替閃，再次觸摸兩次觸控板，操作成功後，紅綠燈會同時閃爍(雙耳同時操作)如果出現主耳紅綠交替閃爍，副耳滅燈的情況，則為兩隻耳機配對成功。



配戴耳機



- 將耳帽斜向下輕輕塞入耳道，以輕擺頭部耳機不晃動為宜。
- 通話時，將耳機麥克風朝向嘴部可使通話更清晰。

三方通話接聽與切換通話

當手機來電時，雙擊觸摸板接聽電話進行通話；當手機有新來電時，雙擊觸摸板保持上一個通話，進行第二個來電的通話。
長按觸摸板2秒可以隨意切換兩個通話。

拒接第二個來電

當手機來電時，雙擊觸摸板接聽電話進行通話；當手機有新來電時，長按觸摸板2秒拒接新來電，繼續保持當前通話。

單耳機使用模式

- 耳機在關機狀態下，任一耳機長按觸控板約5秒，進入配對狀態(紅綠燈交替閃爍)
- 打開手機藍牙搜索配對名，選擇AT-X80R點擊連接。

給耳機充電

耳機放入充電盒中，即開機進入充電狀態，充電時紅燈常亮，充滿電後綠燈常亮1分鐘後熄滅。

給充電盒充電

當電量<30%，兩個綠燈閃亮；當電量在30%~90%，左邊綠燈常亮，右邊綠燈閃亮；當電量>90%以上，兩個綠燈常亮。
※AT-X80R充電盒支援無線充電器充電

產品參數

配對名稱: AT-X80R
藍牙版本: V5.0
待機時間: 約70小時
充電時間: 約2小時
音樂播放: 約4-5小時
通話時間: 約4小時
連結距離: 10米 (無障礙環境下)
電池類型: 聚合物鋰電池
耳機電池容量: 3.7V 40mAh
充電盒電池容量: 3.7V 600mAh
充電盒輸入參數: 5V 500mA
支持協議: HSP/HFP/A2DP/AVRCP

功能介紹

功能	狀態	操作/現象	LED	語音提示
TWS相互配對	開機狀態，且未有配對記錄(首次使用)	長按觸控板1秒開機自動進入配對狀態	紅綠燈交替閃爍	TONE音
	開機狀態下長按5秒進入藍牙配對模式	雙擊觸控板鍵~次進入TWS配對搜索	紅綠燈同時閃爍， 關上左耳進入配對狀態 右耳熄滅。	TONE音
開機	開機狀態	長按觸控板1秒	綠燈長亮1秒	TONE音
	充電狀態	從充電盒拿起，耳機開機	綠燈長亮1秒	TONE音
開機	任意狀態	長按觸控板8秒 (未連接設備是可聯動開機)	紅燈長亮2秒	TONE音
		放入充電盒，開機	紅燈長亮	TONE音
接聽/結束通話	來電響鈴中/通話中	雙擊觸控板	\	TONE音
拒接來電	來電響鈴中	長按觸控板2秒 (觸鬆手)	\	TONE音
喚醒語音助手	已連結狀態	左邊三擊觸控板	\	TONE音
遊戲模式開關	音樂/視頻/遊戲過程中	右邊三擊觸控板 翻/開 遊戲模式	\	開啟: 嘟嘟 關閉: 嘟嘟嘟
音樂暫停/播放	音樂狀態下	雙擊觸控板	\	\
		入耳檢測功能: 1. 取下任何一個耳機，音樂暫停 2. 取下暫停後，15秒內戴上任何一個耳機 音樂繼續播放 (初始狀態是在暫停狀態下，再戴上，不會繼續播放)	\	\
切換上下曲	音樂狀態下	左耳機長按2秒上一曲，右耳機長按2秒下一曲	\	\

客戶服務

有關產品的更多資訊，請參考我們網站 www.int-ai-wa.com。
您可以參考內附的保卡，聯絡當地的aiwa授權經銷商或是客服中心。

產品保固

請參閱包裝盒中提供的保固標籤。
注意: 拆卸設備不在保固範圍內。
注意: 液體浸沒不在保固範圍內。

藍牙耳機售後服務

售後服務與支持

保修期:
自產品購買之日起12個月(請妥善保管購買憑證)

免費服務:

在產品保修期內，凡屬產品本身質量引起的故障，請用戶憑購買憑證與經銷商取得聯繫以享受售後服務。
1、自您購買之日起7日內，本產品出現故障，經由售後服務中心確定為產品質量問題，可享受修理、更換、退貨的服務。
2、自您購買之日起15日內，本產品出現故障，經由售後服務中心確定為產品質量問題，可享受修理或更換的服務。
3、自您購買之日起12個月內，本產品出現故障，經由售後服務中心確定為產品質量問題，可享受修理的服務。

如有任何產品損害或瑕疵非可歸責於產品質量本身，則不在保修範圍內。有下列情形者不屬於保修範圍內：
1、因天災、地震、雷擊、異常電壓、環境因素而發生之故障或毀損。
2、自行或委託未經原廠授權維修之廠商拆卸、改裝或更換非原廠零件。
3、未依使用手冊操作或因人為使用不當而造成損壞者，如產品浸水、腐蝕、摔落、擠壓或置於異常溫度環境下。

有害物質名稱及含量

部件名稱	有害物質									
	Pb	Cd	Cr	六價Cr	多環芳烴	鄰苯二酚	鎘	鎘	鎘	鎘
耳機主體	X	○	○	○	○	○	○	○	○	○
電池	○	○	○	○	○	○	○	○	○	○
耳塞	○	○	○	○	○	○	○	○	○	○
配件	○	○	○	○	○	○	○	○	○	○
充電線	X	○	○	○	○	○	○	○	○	○

本表格依據 SJ/T 11364 的規定編制
○：表示該有害物質在部件所有均勻材質中的含量均在EU/2015/863規定的限量要求以下。
X：表示該有害物質至少在該部件的某一均質材料中的含量超出EU/2015/863規定的限量要求，但目前行業無成熟的替代方案，在豁免範圍內仍符合歐盟RoHS指令的環保要求。

使用年限
如本手冊所述，在正常使用條件下，本產品的環保使用期限為10年。
在此期間，產品不會洩漏任何危險物質，本產品可以回收，必須按照當地法規處理。



提示

- 使用產品前請仔細閱讀本使用說明書並妥善保管；
- 首次使用時，請先將本產品充滿電；
- 如果產品長期(超過2周)不使用，請對其充電；
- 必須選擇正規廠家生產且經過國家認證的充電器；
- 若手機無法搜索藍牙耳機，請確認藍牙耳機是否處於“配對模式”，若長時間未進行配對或連接，藍牙耳機配對功能將關閉，請重新開啟藍牙耳機至“配對模式”；若手機程序出錯，請重啟手機；若藍牙耳機程序出錯，請重啟藍牙耳機或者恢復出廠設置。

警告

- 請勿以任何理由拆除或維修改裝耳機，否則可能會導致起火、電子擊穿甚至徹底損壞產品。
- 請勿將產品置於溫度過低或過高(0°C以下或45°C以上的環境下)。
- 請避免靠近兒童或動物的眼睛使用產品指示燈。
- 請勿在雷暴天氣下使用該產品，雷暴可導致本產品工作不正常並增加觸電的危險。
- 請勿使用油垢及其他揮發性液體擦拭本產品。

注意:長時間使用耳機可能會造成聽力損害，請合理安排使用時間。
本耳機不支持輸出超過2A的充電座給耳機充電，否則會損害耳機本體。



Aiwa Electronics Int'l Co., Ltd.
Explore more at www.int-aiwa.com



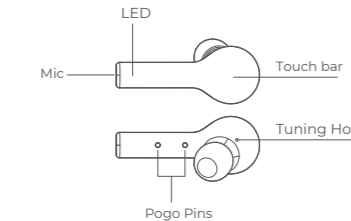
AT-X80R

True Wireless Earphones

Designed in Japan
アイワ株式会社

Overview

Choose Your Eartips



Please try medium eartips first as they fit most people.

How to Pair

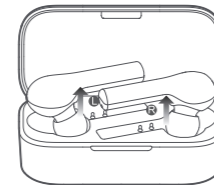
Initial Pairing:

1. Remove both earbuds from charging case.
2. Re-insert them back into the charging case.
3. Remove them again to activate the earbuds.
4. Turn on BT on your mobile device and connect to "AT-X80R"

Upon successful pairing, earbuds will automatically power up once removed from the charging case, if not please charge and repeat initial pairing process

Switching between mobile devices:
1. Turn off mobile device BT function to disconnect.
2. Earbuds automatically enter pairing mode.
3. Turn on BT on your second mobile device and connect to "AT-X80R"

Multi-device connection is not available.
Earbuds will auto reconnect to the last connected device upon powering up again

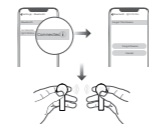


Reset Your Earbuds

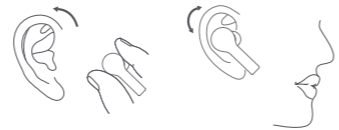
1. Disconnect and erase any history of your earbuds from your device manually from your device's BT list.
2. Pick up both earbuds and depress both touch sensors (L & R) simultaneously for approx. 8s/ until the LED indicator light glows red to power off.
3. Depress both touch sensors (L & R) simultaneously again for approx. 10s/ until the LED indicator light flashes red and green.
4. Factory reset is successful. Please refer to the "Initial Pairing" page of the manual to attempt to pair your earbuds with your device again.

Connecting L and R side earbuds to each other

1. Power off both earbuds.
2. Depress both touch sensors (L & R) for approx. 5 s/ until the LED indicator light flashes red and green.
3. Double tap touch sensors and both earbud's LED indicator light should flash red and green.
4. One side earbud's indicator light shut down + the other side earbud's indicator light flashes red and green indicates successful connection.



How to Wear



1. Select a suitable sized silicone ear tip for your ear size.
2. Adjust the mic towards your voice to enjoy a better calling experience.

Call Control

1. Double tap touch sensor to answer an incoming call.
2. Long press touch sensor to ignore call.
3. Double tap touch sensor to put the first call on hold and answer a second incoming call.
4. Long press touch sensor (2s) to ignore a second call.
5. Long press touch sensor to switch between an active and held call.

Single Side Earbuds Usage

1. Depress touch sensor of preferred earbud side for approx. 5s to enter pairing mode.
2. Connect to "AT-X80R" accordingly.

Charging Your Earbuds
Simple place earbuds back into charging case to charge then up.

Red indicator lights indicate charging in progress
Green indicator lights indicate charging complete

Charging Your Charging Case
Battery capacity > 30% (2 flashing green lights)
Battery capacity 30%-90% (Solid green on the left side, Blinking green on the right side)
Battery capacity >90% (Both lights are solid green)
The charging case supports wireless charging

Product Parameters
Pairing name: AT-X80R
Bluetooth version: V5.0 Stand-by time: approx. 70hrs
Charging time: approx. 2hrs Playback time: approx. 4-5 hrs
Operation range: 10m(with no obstacle)
Battery type: li-ion
Battery capacity(earbud):3.7V 40mAh
Battery capacity(charging case):3.7V 600mAh
Input parameter(charging case):5V = 500mA
Bluetooth profiles: HSP/HFP/A2DP/AVRCP

Function Introduction

Functions	Current status	Operation/result	LED	Prompt
Connecting L & R side earbuds together	Earbuds are off. (No previous pairing record)	Depress touch sensor for 1s to power up earbuds. Earbuds will automatically enter pairing mode.	LED blinks red and green	TONE
	Earbuds are off.	1. Depress both touch sensors (L & R) for approx. 5 s/ until the LED indicator lights flashes red and green. 2. Double tap touch sensors	LED blink red and green then right LED turns off	TONE
Power-on	Earbuds are OFF and out of the charging case	Long press touch sensor for approx. 1s	LED glows green for 1s	TONE
	Earbuds inside the charging case	Remove earbuds from the case	LED glows green for 1s	
Power-off	Power-on	Long press touch sensor for approx. 8s	LED glows red for 2s	TONE
		Pop earbud into the case to power off	LED glows red	
Answer/end call	Incoming call/calling	Double tap touch sensor	\	TONE
Ignore call	Incoming call	Long press touch sensor for approx. 2s	\	TONE
Voice assistant	Connected	Triple tap touch sensor	\	TONE
Gaming mode	Playing/gaming	Triple tap touch sensor to switch on/off gaming mode.	\	On: two beeps Off: three beeps
Music pause/play	Music playing	Double tap touch sensor to pause /play. In-Ear Detector 1. Music will pause when either earbuds are removed from ear. 2. Wearing it again within 15 seconds will resume music playback.	\	Beep
Skip track	Music playing	Long press left earbud for previous track. Long press right earbud for next track.	\	\

Warranty Card

Warranty duration: 12 months after purchase (Please inquire with your local distributor for more specific information.)

Model Number
Date of Purchasing:
User's Name:
User's Phone:
User's Address:
Shop's Name:
Shop's Address:
Comments:

Warranty does not cover:

1. Damages caused by un-authorized disassembly.
2. Defects or physical damages caused by user.

FCC Statement

This equipment has been tested and found to comply with the limits for a Class B digital device, pursuant to Part 15 of the FCC Rules. These limits are designed to provide reasonable protection against harmful interference in a residential installation.

This equipment generates uses and can radiate radio frequency energy and, if not installed and used in accordance with the instructions, may cause harmful interference to radio communications.

However, there is no guarantee that interference will not occur in a particular installation. If this equipment does cause harmful interference to radio or television reception, which can be determined by turning the equipment off and on, the user is encouraged to try to correct the interference by one or more of the following measures:

- Reorient or relocate the receiving antenna.
- Increase the separation between the equipment and receiver.
- Connect the equipment into an outlet on a circuit different from that to which the receiver is connected.
- Consult the dealer or an experienced radio/TV technician for help.

This device complies with part 15 of the FCC Rules. Operation is subject to the following two conditions:
(1) This device may not cause harmful interference, and (2) this device must accept any interference received, including interference that may cause undesired operation.
Changes or modifications not expressly approved by the party responsible for compliance could void the user's authority to operate the equipment.



10

Hazardous substances and their contents in the item

Part Name	Hazardous Substances									
	Pb	Hg	Cd	Cr (VI)	PBB	PBDE	DEHP	DEP	BBP	
Main body	X	O	O	O	O	O	O	O	O	O
Battery	O	O	O	O	O	O	O	O	O	O
Ear tips	O	O	O	O	O	O	O	O	O	O
Accessories	O	O	O	O	O	O	O	O	O	O
Charging cable	X	O	O	O	O	O	O	O	O	O

This form is made by SJT 11364 regulation.
O: means that hazardous substance content in the homogeneous materials of this part is within the limits of (EU) 2015/863 regulation.
X: means that hazardous substance content in at least one certain homogeneous material of this part is beyond the limits of (EU) 2015/863 regulation, but there is no mature alternative in the industry at present, it still conforms to the EU RoHS Directive in the scope of exemption.

Notes: Please arrange using time properly as your hearing may be damaged by using the device for a long time.

Tips

1. Before using the headset, please read the manual carefully and keep it for future references.
2. The headset need to be fully charged prior to first-time use.
3. If the headset is left unused for over two weeks, please recharge it periodically.
4. Please use the chargers made by qualified manufacturer.
5. If the headset cannot be found by your phone, please check whether it is in pairing mode; if left unconnected for a long while, the headset will exit pairing mode, please re-enter the mode; if a procedure error of your phone occurs, reboot it; if a procedure error of the headset occurs, reboot or reset it.

Caveats

1. Never disassemble or modify your headset for any reasons to avoid any damages and danger.
2. Do not store the headset in extreme temperatures (under 0°C over 45°C).
3. Avoid using the indicator close to the eyes of children or animals.
4. Do not use this headset during a thunderstorm to avoid irregular function and increased risk of electric shock.
5. Do not use harsh chemicals or strong detergents to clean the headset.
6. Keep the headset dry.



Aiwa Electronics Int'l Co., Ltd.
Explore more at www.int-aiwa.com